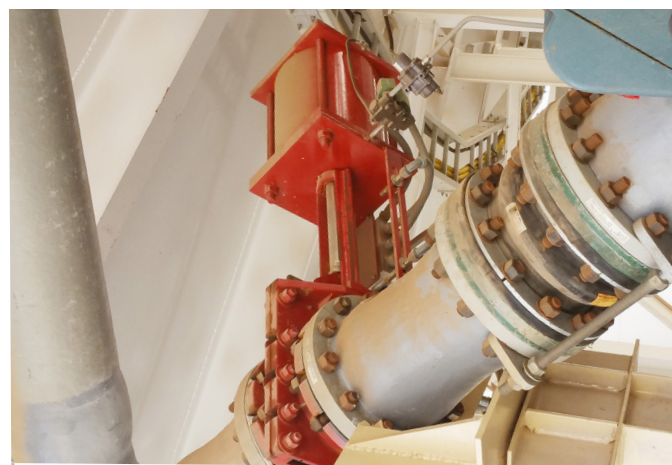
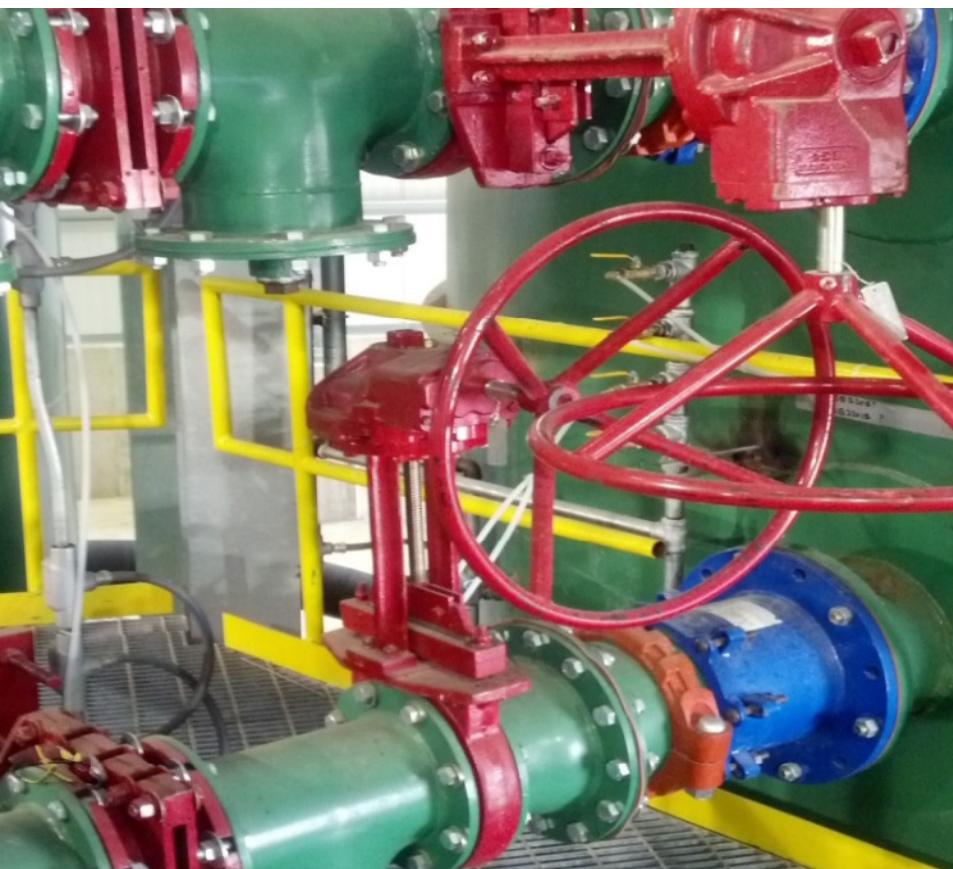




Red Valve

Knife Gate Valves



Designed for Tough Slurries



Rugged and Dependable Service

Red Valve manufactures two different types of Knife Gate Valves that are specifically designed for on/off service: Series D Flexgate Valves and Series DX Slurry Valves. Both the Series D and Series DX feature a heavy-duty, stainless steel gate that passes through two cartridge-reinforced elastomer slurry seats. These special elastomer slurry seats provide compression interference fit, resulting in a drop-tight seal. When the valves are in the open position, the full-port eliminates flow obstructions, keeping abrasive wear to a minimum. The Series D and Series DX are available with manual, hydraulic or electric actuators.

Ease of Maintenance

The valve and topworks of the Series D and Series DX require very little maintenance. The only replacement parts for the Series D are packing and the cartridge slurry seats. The only replacement parts for the Series DX are cartridge slurry seats. The unique design of both valves

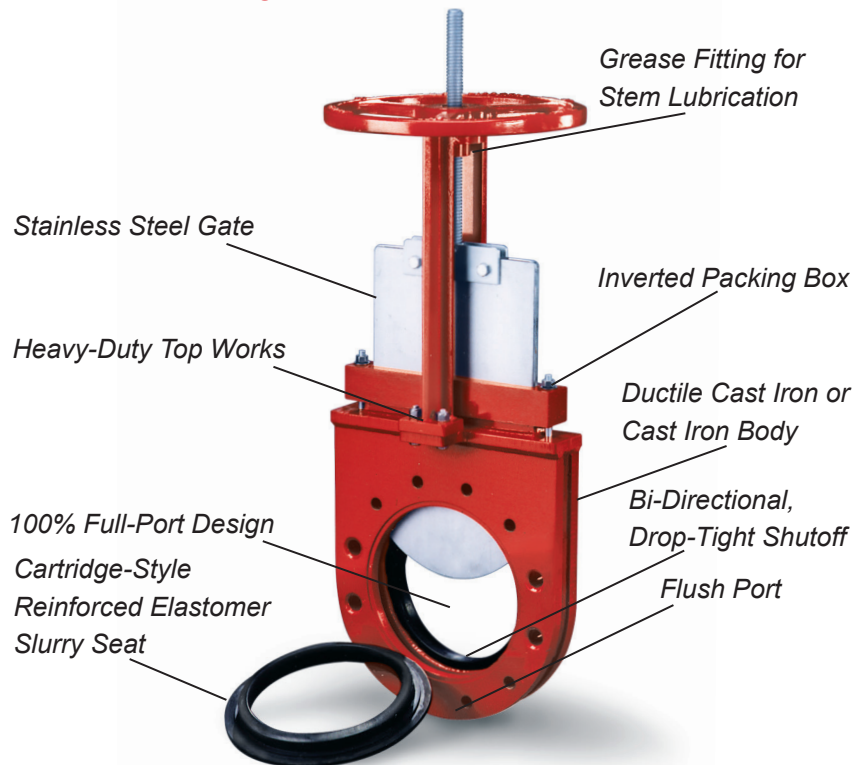
allows the cartridge slurry seats to be replaced easily, with no valve disassembly required. The valve is simply unbolted from the line, the old seats are removed, and the new cartridge slurry seats are inserted into the valve. The Series D packing material is contained in a unique inverted packing box that simplifies replacement. The Series D can remain in-line while the topworks gate and packing box are removed. The innovative design of the Series DX has a wiper blade that eliminates the need for packing. Both the Series D and DX designs make packing removal from the body unnecessary.



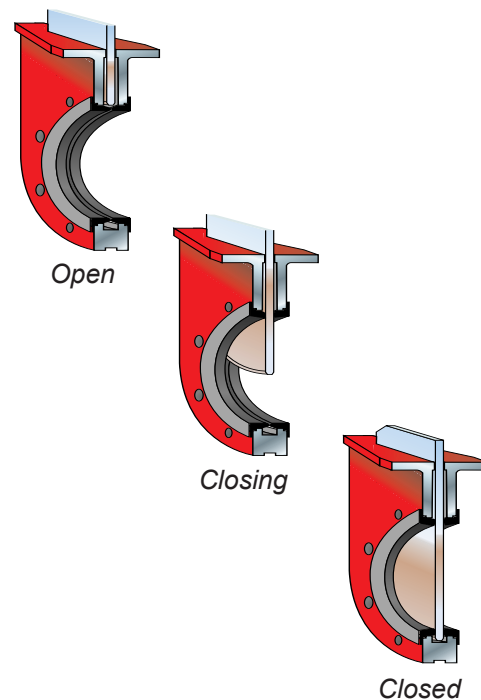
Cartridge slurry seat replacement process.

Engineered for Top Performance

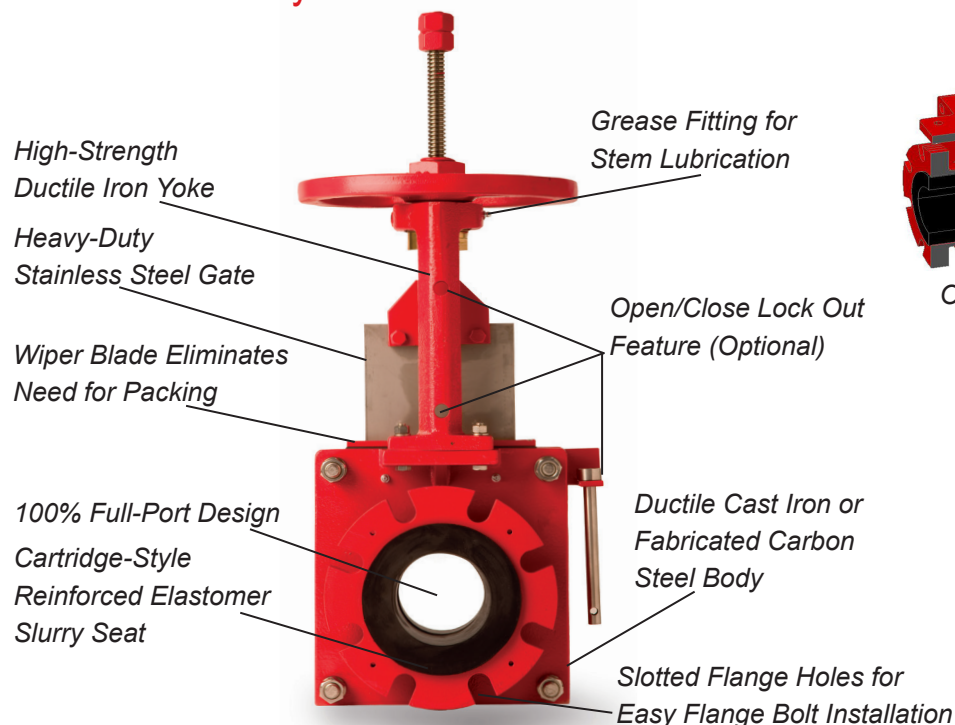
Series D Flexgate Valve



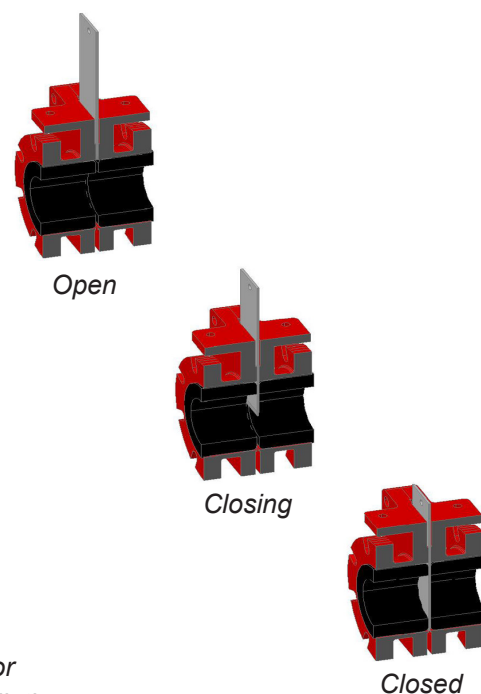
Series D Closing Action



Series DX Slurry Valve



Series DX Closing Action



Accessories

Floorstands are available with bevel gears, electric actuators and handwheels. Standard length is 36" (914mm) to centerline of handwheel. Recommended for valves with long extensions to relieve stem loading.

Special Paints and Coatings such as epoxy are available.

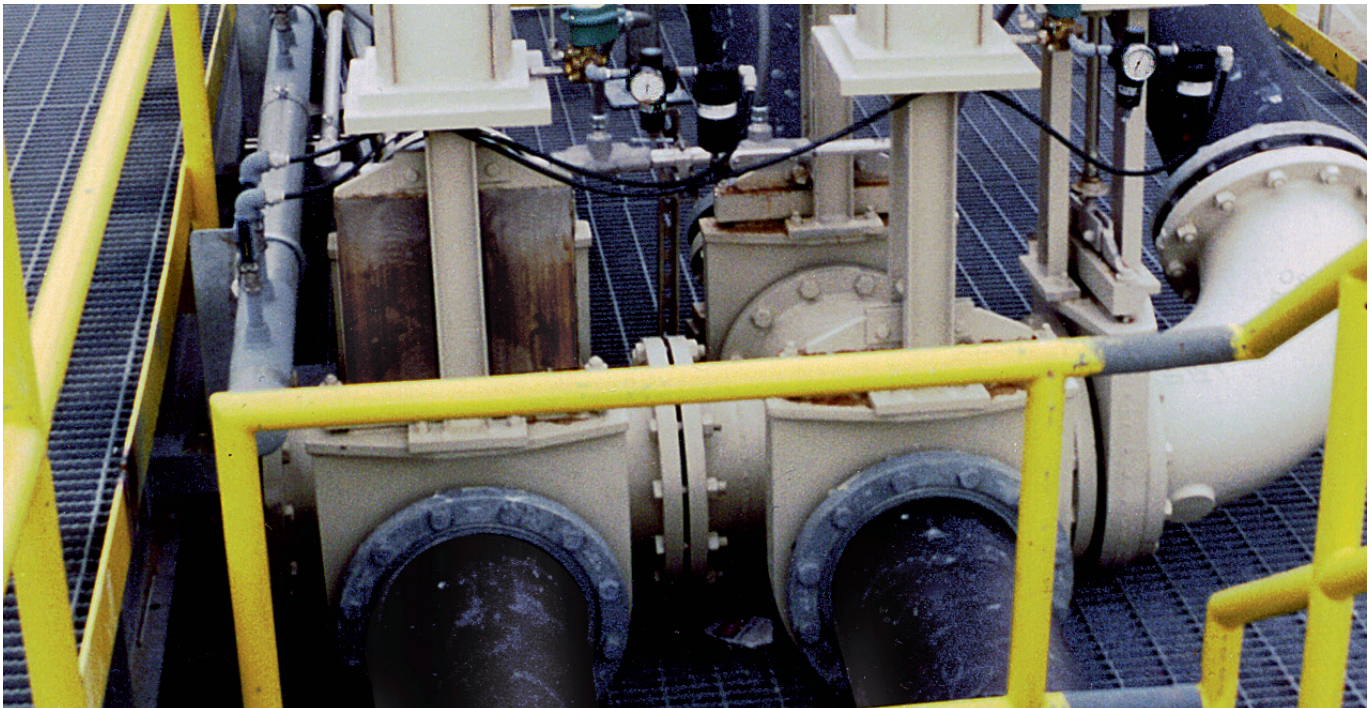
Atmospheric and Pressure-Containing Bonnets can be supplied to protect the topworks of the valve.

Pneumatic Actuator Cylinders are made from a fiber-reinforced thermoset epoxy matrix that is strong and lightweight.

Four-Way Solenoid Valves can be mounted and piped at the factory, making the valve complete and ready for installation.

Standard Bevel Gear Actuators have a gear ratio of 4:1. Other gear ratios are 8:1, 12:1, 16:1 and 24:1.

Limit Switches, when specified, are yoke-mounted to provide remote indication of valve position. Standard switches are 110-120 VAC, NEMA 4 rated. Other types and options are available.



Knife Gate Solutions for Many Applications

Mining Industry

Red Valve Knife Gate Valves are widely used in copper mines, phosphate mines and many other mining processes, including chemical separation and thickener underflow lines. Replaceable cartridge slurry seats make the Series D and Series DX ideal for abrasive applications.



Mining Industry

Water & Wastewater Treatment Plants

Red Valve Large-Diameter Knife Gate Valves are often installed in water and wastewater treatment plants and stormwater pumping stations. The valve's positive shutoff and reliable performance makes them ideal for many operations such as pump isolation, grit and sludge.



Water & Wastewater Treatment Plants

Power Industry

Red Valve Knife Gate Valves are excellent for use throughout a power plant. Fly ash, bottom ash, lime and cooling water are all popular applications. Low operating torque provided by the double stem seal makes them the preferred choice of operational personnel.



Power Industry

General Industry

Red Valve Knife Gate Valves are used in many industries where low-profile, high-performance valves are needed. Popular installations include hopper discharge valves, pump isolation valves, diverter valves, emergency shutoff valves and tank drain valves.



General Industry

Pulp & Paper Mills

Red Valve Knife Gate Valves have many uses in paper manufacturing. They are ideally suited for the harsh external environment in pulping areas. Their stainless steel gates ensure a positive shutoff, even through pulp fibers.



Pulp & Paper Mills



Red Valve offers a worldwide, world-class custom service network. With corporate offices in Pittsburgh, PA, manufacturing facilities in Gastonia, NC, and a network of sales representatives around the globe, Red Valve has the sales engineering team to help you select the best choice of valves and related products for your applications.



Red Valve[®]
The World Leader in Pinch and Check Valve Technology™

750 Holiday Drive, Suite 400, Pittsburgh, PA 15220 | 412-279-0044 | support@redvalve.com | RedValve.com

The information presented in this catalog is provided in good faith. Red Valve Company, Inc. and Tideflex[®] reserves the right to modify or improve its design specifications without notice and does not imply any guarantee or warranty for any of its products from reliance upon the information contained herein. All orders are subject to Red Valve Company, Inc. standard terms and warranty and are subject to final acceptance by Red Valve Company, Inc.

Tideflex, Red Valve, and the Red Valve “rv” logo are registered trademarks of Red Valve.

© 2024 Red Valve. All rights reserved.